



ToolCAM



www.atoolsoftware.it

info@atoolsoftware.it

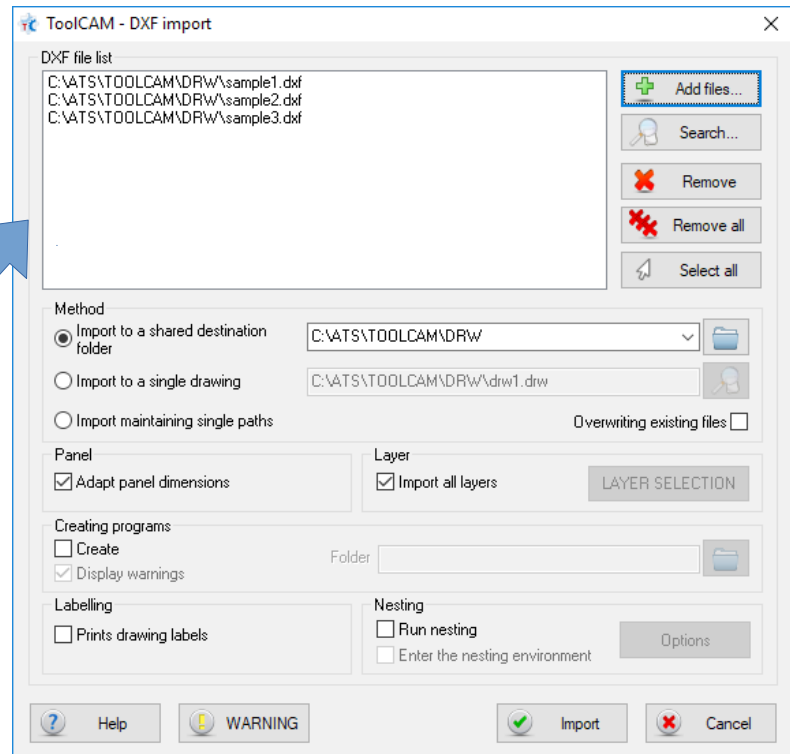
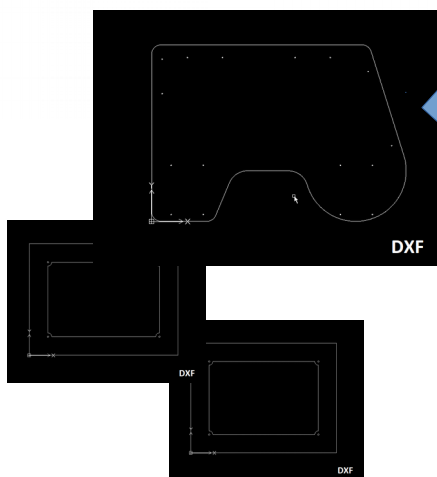




What is ToolCAM	pag. 4
Supported machines	pag. 6
To whom it is addressed	pag. 7
End User	pag. 7
Machine Manufacturers.....	pag. 7
Machine Resellers	pag. 7

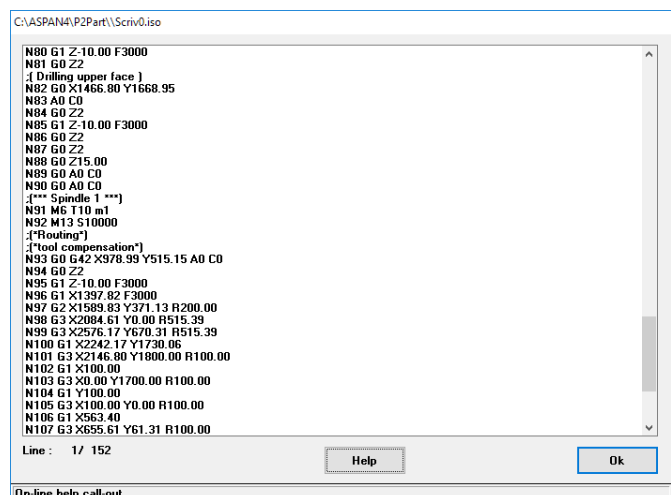
What is ToolCAM

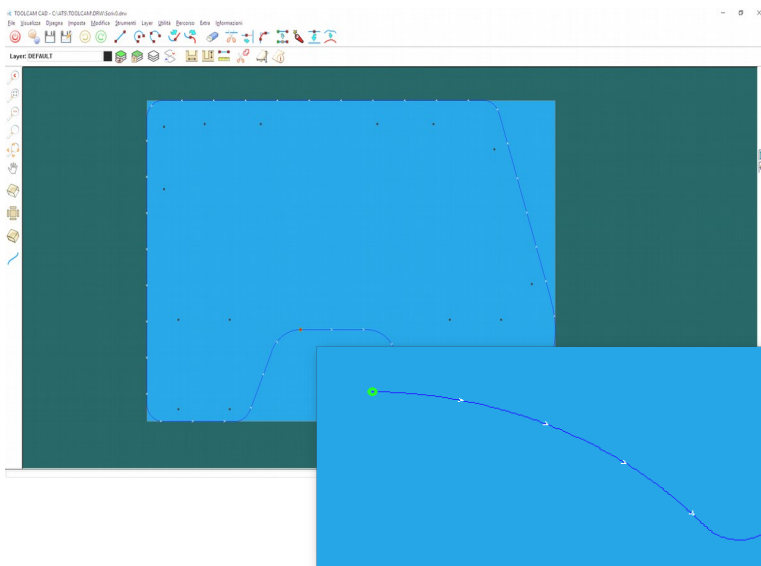
ToolCAM is a powerful program to **convert DXF files** into **ISO language** for numerical control machines. With **ToolCAM** it is possible to obtain directly, or through a dedicated Layer structure the **Part-Program** for different types of **CNC machines** offering a **simple and low cost solution** to import DXF files and convert them into machining.



ToolCAM does not create only the coordinate code of an imported profile, but it provides a **full CAM environment** that allows user to define **machining parameters** and **sequences**, to generate an ISO file that is **ready for use**.

The import is dedicated to machining on a **single volume**, allowing you to manage them on **all faces**.



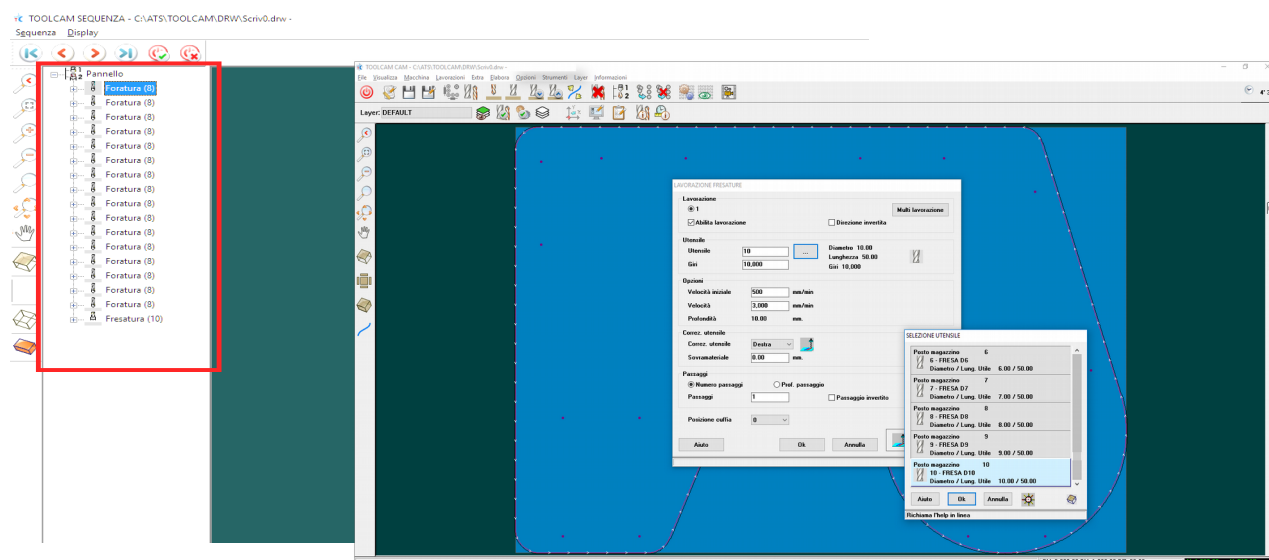


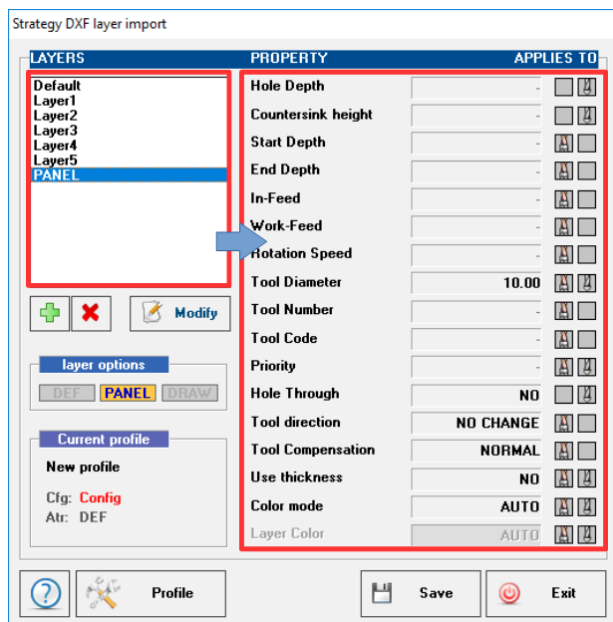
A simplified CAD environment allows you to preview imported profiles, instantly displaying the **start point**, **end point**, and **direction** of the paths obtained. It is thus possible to **highlight** any points of discontinuity.

It is possible to intervene partially on previously imported paths by changing **direction**, **start point**, **end point**, and make **additional minor changes**.

Using the **integrated CAM environment** of ToolCAM, it is possible to **associate tools** to the profiles, automatically or by selecting them from the tooling list, specify the **machining properties** and determine the desired **sequence**.

In the case of multiple drills, the program will automatically recognize and create **MultiDrill**.





The **Advanced DXF import** of ToolCAM also allows, through the use of **layers** and a dedicated processor, to **automatically assign machining properties** to imported entities:

- ✓ **Machining Tool**
- ✓ **Diameter** to be associated to routing and drills
- ✓ **Machining direction**
- ✓ **Tool correction**: right, center, left of the path drawn
- ✓ **In and working feed**
- ✓ **Machining priority** in order to obtain desired **sequence**.

Many other parameters are available to get the result desired.

Supported machines

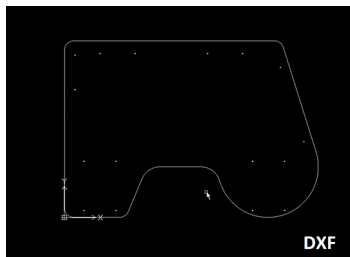
ToolCAM supports a large number of CNC machines with several numerical controls including CNI-RTCOM, XNC500, XNC1000, CID and CIDx language, TRIA, KVARA, XILOG3, XILOG4, XilogPlus, Osai 8600-8601, Osai Series 10, Osai Open, Siemens, Bosh, ESA and many other numerical controls, giving support to machines of various manufacturers.



ToolCAM is the **ideal tool** for CNC machines dedicated to the world of **wood, aluminum, plastic, marble, glass** and **any other material** processed with a numerical control machining center.

To whom it is addressed

ToolCAM is intended for **End User**, **Machine Manufacturers** and **Resellers**.



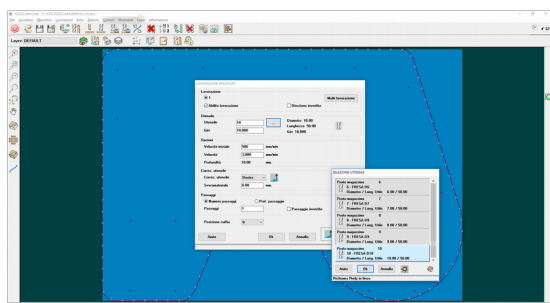
End User

Converting drawings created with generic CAD into **programs for a CNC machine** is a common need and it is not always possible to do it easily with the tools you have available. **ToolCAM** is an optimal solution for those who already have a CAD environment.

Machine Manufacturers

With **ToolCAM** it is possible to provide customers with a **low cost** and at the same time **powerful and functional solution**, equipped with a **complete CAM environment** to optimize the machining.

It will also be possible to **upgrade ToolCAM** at any time to meet the customer's needs, with the possibility to integrate it with the **Nesting Module** or to upgrade it to **PARTNER/ASPAN**, thus also making use of a complete CAD environment and further features.



Machine Resellers

Machines can be equipped with obsolete software that strongly limit the user, requiring in some cases the direct writing of the ISO code or antiquated programming procedures. With **ToolCAM** the customer who buys a used machine, will have a **simple and powerful CAM tool**, at **low cost** and will enjoy all the potential of a **modern and expandable software**.



ATool Software S.r.l.
Via L. La Marca, 28 – 61121 Pesaro (PU) – Italia
Tel. +39 0721 64135
www.atoolsoftware.it – info@atoolsoftware.it