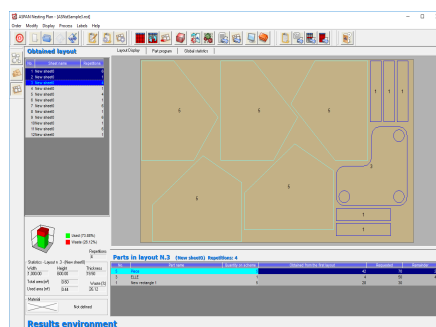
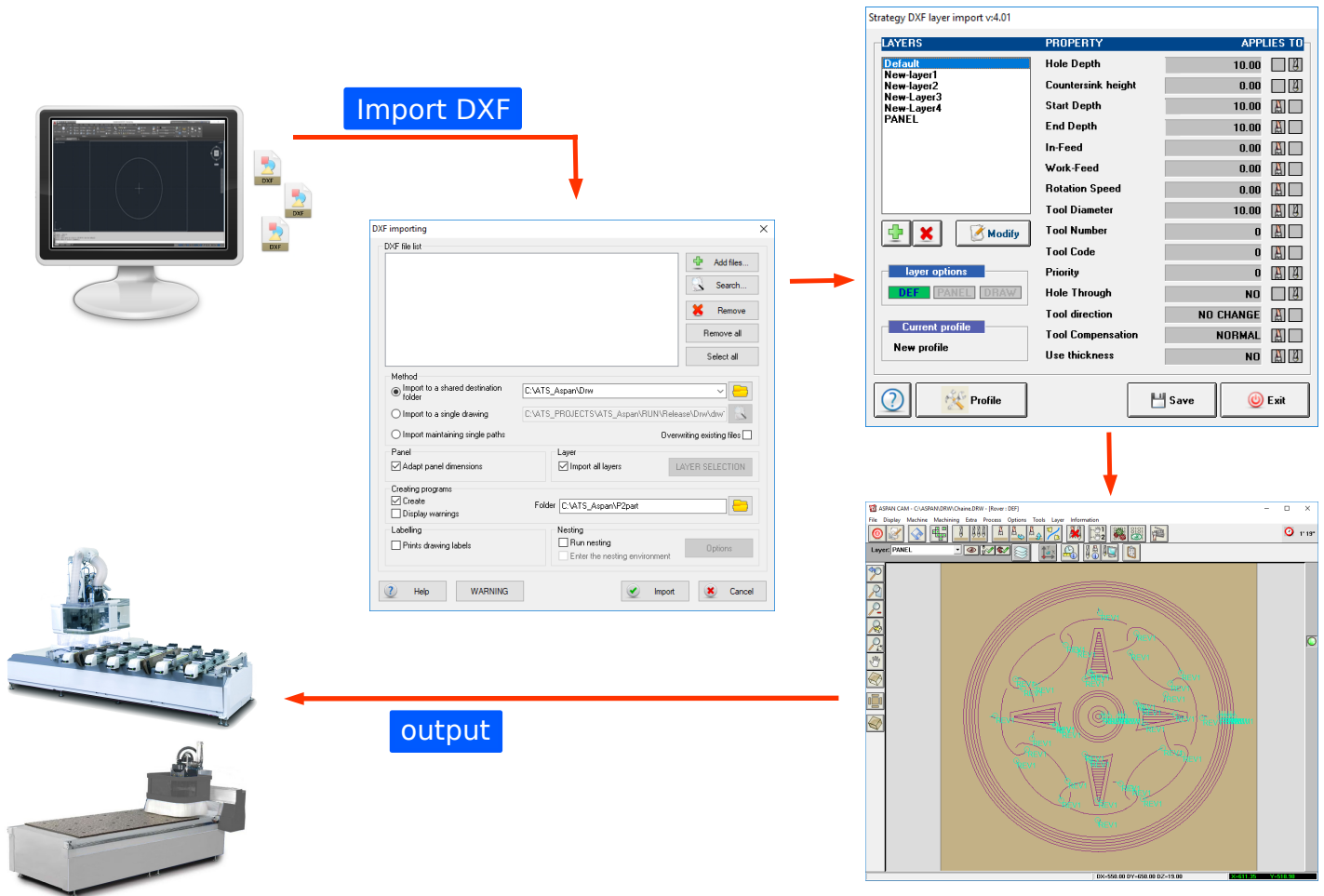


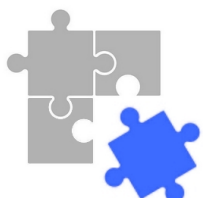
ToolCAM is an **A Tool Software's** product that allows in few steps to import and convert **DXF** files. With **ToolCAM** you can have directly, or using a dedicated layer structure, machining **Part-Programs** for different type of **CNC Machines**.

ToolCAM gives the possibility to preview the imported drawing, if necessary apply simple modifications, and then, with CAM functionalities, create quickly the **Part-Program**.

ToolCAM philosophy is to give you the maximum simplicity to create **CNC** code.



ToolCAM functionalities can be extended by adding optional modules, including the **"NESTING"** that creates an optimization of imported **DXF** drawings, and subsequently process the scheme.



ToolCAM is the missing step between a CAD environment and the **Machine**.

ToolCAM can process **Part-Programs** for a large number of **CNC Machines**.

It's available a special option to add different **Machine Configuration**.